



Alcester Street, Redditch, Worcestershire, B98 8AE

# MAIN THEATRE TECHNICAL SPECIFICATION

*Updated 17<sup>th</sup> April 2014*

Administration 01527 61544  
Select department from the options

Box Office 01527 65203

For email contacts please see :

[www.redditchpalacetheatre.co.uk](http://www.redditchpalacetheatre.co.uk)



## CONTENTS

- 1. Stage Dimensions**
- 2. Loading Access**
- 3. Stage Suspension**
- 4. Accommodation**
  - 4.1 Ground Floor Dressing Room Block**
  - 4.2 First Floor**
  - 4.3 Orchestra Pit**
  - 4.4 Second Floor (Front of House)**
  - 4.5 Stage**
- 5. Stage Lighting**
- 6. Lighting Circuit Plan**
- 7. Standard Lighting Rig**
- 8. Stage Plan**
- 9. Hanging Plot & Grid Plan**
- 10. Scene Doc and load in Plan**
- 11. Sound**
  - 11.1 Auditorium Sound Reinforcement**
  - 11.2 Main Mix Position**
  - 11.3 Loose Equipment**
  - 11.4 Show Relay & Communications**
- 12. Multi Media**
- 13. Power Information**
- 14. Miscellaneous**
- 15. Fire Exit Route Capacities**
- 16. Dressing Room and back stage Plan**



## 1. STAGE DIMENSIONS

NOTE: Nails, tacks or staples are **NOT** to be used in the stage. The use of screws is accepted as long as they are fully removed after use. The painting of the stage is also **NOT** permitted.

Proscenium Stage, Raked; Pros Opening	6.7m (22')
Pros Height to Tabs	3.8m (12'6")
Depth of Stage	6m (19'6")
Extension over orchestra pit ( <i>removable by 5 individual sections</i> )	1.60m (5'3")
Wing Widths SR	2m (6'6")
Wing Widths SL ( <i>Access to Scene Dock via SL wing</i> )	1.52m (5')
Stage Width Wall to Wall ( <i>stage left to stage right</i> )	14.2m (46'6")
The Stage has a rake of	25 mm in 1m (1 in 40)

## 2. LOADING ACCESS (Please contact us before your arrival for the car park barrier code)

Main vehicle load in is in the Palace Theatre car park GPS location **52.305718,-1.93785** (see plan section 10) get in doors through scene doc stage left: Width: **1.5m (4'9")** Height: **3.124m (10'2")**  
Additional load in via Stage Right. (restricted access) Width: **2.16m (7'1")** Height: **3.25m (10'8")**

## 3. STAGE SUSPENSION

Height of Grid:	<b>11.9m (38'6")</b>	Max. Scenery / Cloth Height:	<b>5.5m (18')</b>
Maximum uniform loading of Grid (Standard lx is weight is <b>343Kg</b> ):			<b>1.6 Ton</b>
16 x Hemp Lines. <b>Max 75 Kg</b> per bar ( <b>No counter weights</b> ) Width:			<b>9.2m (30')</b>
3 x 10 circuit lighting bars with a Max loading of:			<b>250 Kg</b>
Main Tabs on Counter Weight			

## 4. ACCOMMODATION Numbers in brackets relate to people per area (see note 2)

### 4.1 Ground floor Dressing Room Block (20)

Dressing Room 1 (3)	Dressing Room 3 (3) with single Basin
Dressing Room 2 (2) with single Basin	Dressing Room 4 (5) with two Basins
1 x Disable toilet and shower combined	
1 x Laundry Room / Kitchen with Auto Washer, Dryer, Steam Iron and Ironing Board and tea and coffee making facilities	

### 4.2 First floor (40)

Dressing Room 5 (5) with single Basin	Dressing Room 7 (15) with two Basins
Dressing Room 6 (12) with two Basins	2 x Toilets
Gents Showers (2 cubicles) (2)	Ladies Showers (2 cubicles) (2)

All dressing rooms have central heating, show relay and back stage call system.

### 4.3 Orchestra pit (16)

14 x Lit music stands
1 x Lit conductors stand
14 x folding chairs
1 x Steinbeck Upright Piano ( <b>subject to tuning charge</b> )
1 x Yamaha Clavinova CLP 550 ( <b>subject to hire charge</b> )

### 4.4 Second Floor (front of house)

Studio (50)

### 4.5. Stage (120)

### PLEASE NOTE:

1. *We do not have the facilities or staff to provide hot food or sandwiches.*
2. *Numbers provided for people per area is a maximum guide of adults for each area and must be reduced accordingly when set / props/ costume are stored or used in that area.*
3. **THE ENTIRE BUILDING IS A NO SMOKING ZONE.**



## 5. STAGE LIGHTING

Lighting desk: Zero 88 Orb XF  
 Dimmers: Strand Permus 96 Circuits. 2.5K (10 amps) per channel.  
 3 x 7.15m IWB (On stage) 250 Kg each hand winch.  
 6 x DMX points: Dimmer room (SL), DSR, DSL, CSL, CSR, US1, USR, LX 1, LX 3, front of Circle bar, FOH Booms, FOH Bar & Orchestra Pit

### Lanterns used for the Standard Rig:

#### **FRESNELS**

6 x 1.2k CANTATA With barn doors

#### **PROFILES**

4 x 26 Deg ETC Source 4 Lustr+  
 6 x 50 Deg ETC Source 4 Lustr+  
 4 x ETC Source 4 Lustr+ with Cyc Wash  
 4 x 1.2k Cantata 11/26  
 6 x 575w Source 4 26°  
 6 x 650w Prelude 16/30  
 5 x 600w Brio 18/30

#### **OTHER**

6 x 3 x 36 watt LED fine art moving heads for all stage colour washes.  
 12 x 1k Parcans P64 CP62 Lamp  
 2 x 1k Parcans P64 CP61 Lamp  
 1 x Black light U V Gun  
 4 x MAC 250+  
 4 x MAC 250

### Mac 250 Gobo Positions

	Pos 1	Pos 2	Pos 3	Pos 4	Pos 5	Pos 6	Pos 7	Pos 8
LX3 250	Leaf Brk	Bubbles Brk	Glass line	Propeller	Single Dot	Circular line	Worms	3 dot
LX1 250+							Blue Dot	Pink Swirl
FOH 250+							Roses	

### Additional Lanterns Available:

#### **FRESNELS**

14 x Cantata with Barn Doors

#### **PROFILES**

4 x 1.2k Cantata 18/32

#### **OTHER**

3 x 500w Coda 3  
 12 x Parcans P64 CP62 Lamp  
 6 x 1k Floor Cans P64 CP62 Lamp (Chrome)  
 10 x Birdies  
 4 x LED Pin Spots

#### **ACCESSORIES**

2 x Iris to fit Cantata, Prelude & Brio Profiles  
 6 x B Size Gobo holders (GH06)  
 6 x A Size Gobo holders (GH40)

#### **FOLLOW SPOTS**

2 x Robert Juliet Foxie MSR 750 Lamp  
 (Complete with Sights & Colour Magazine loaded as per standard lighting Rig)

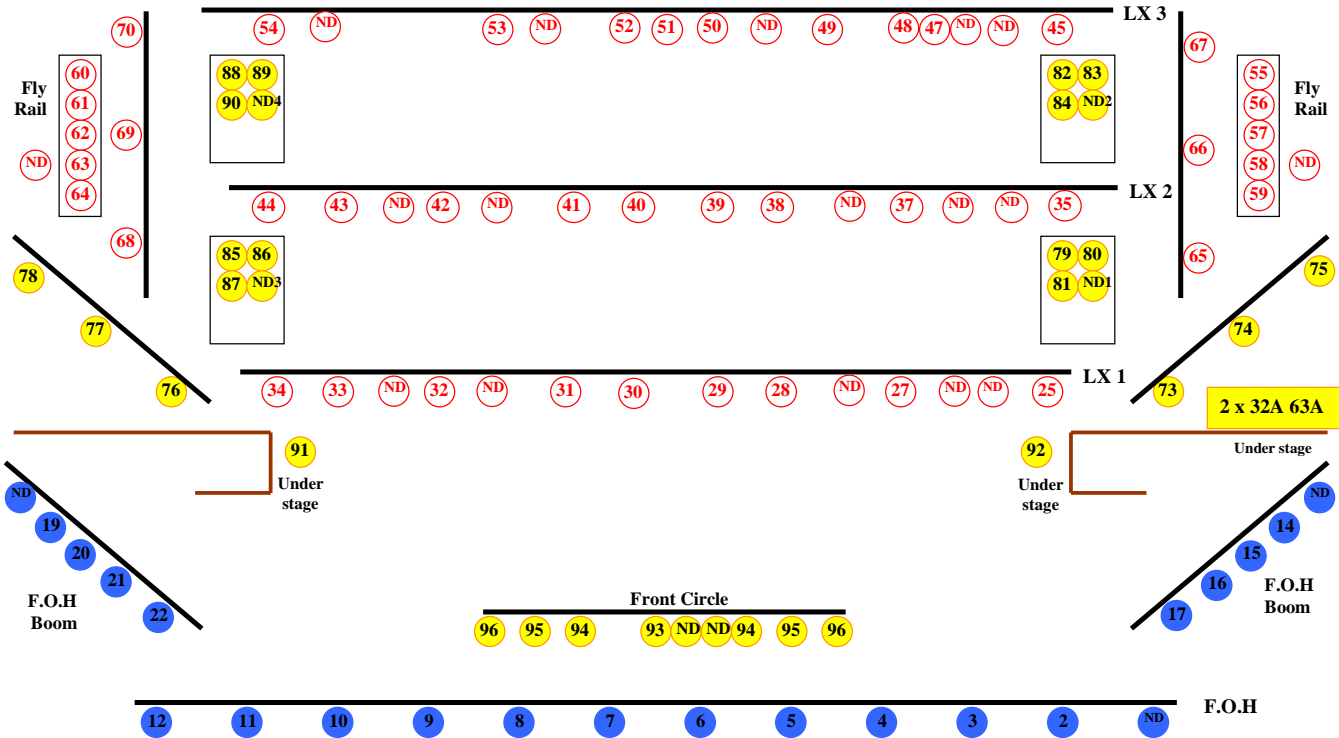
We hold a reasonable stock of lee colour gel and various gobos. If you have exact colour or gobo requirements please let us know. There may be an additional charge for this.



# 6. LIGHTING CIRCUIT PLAN



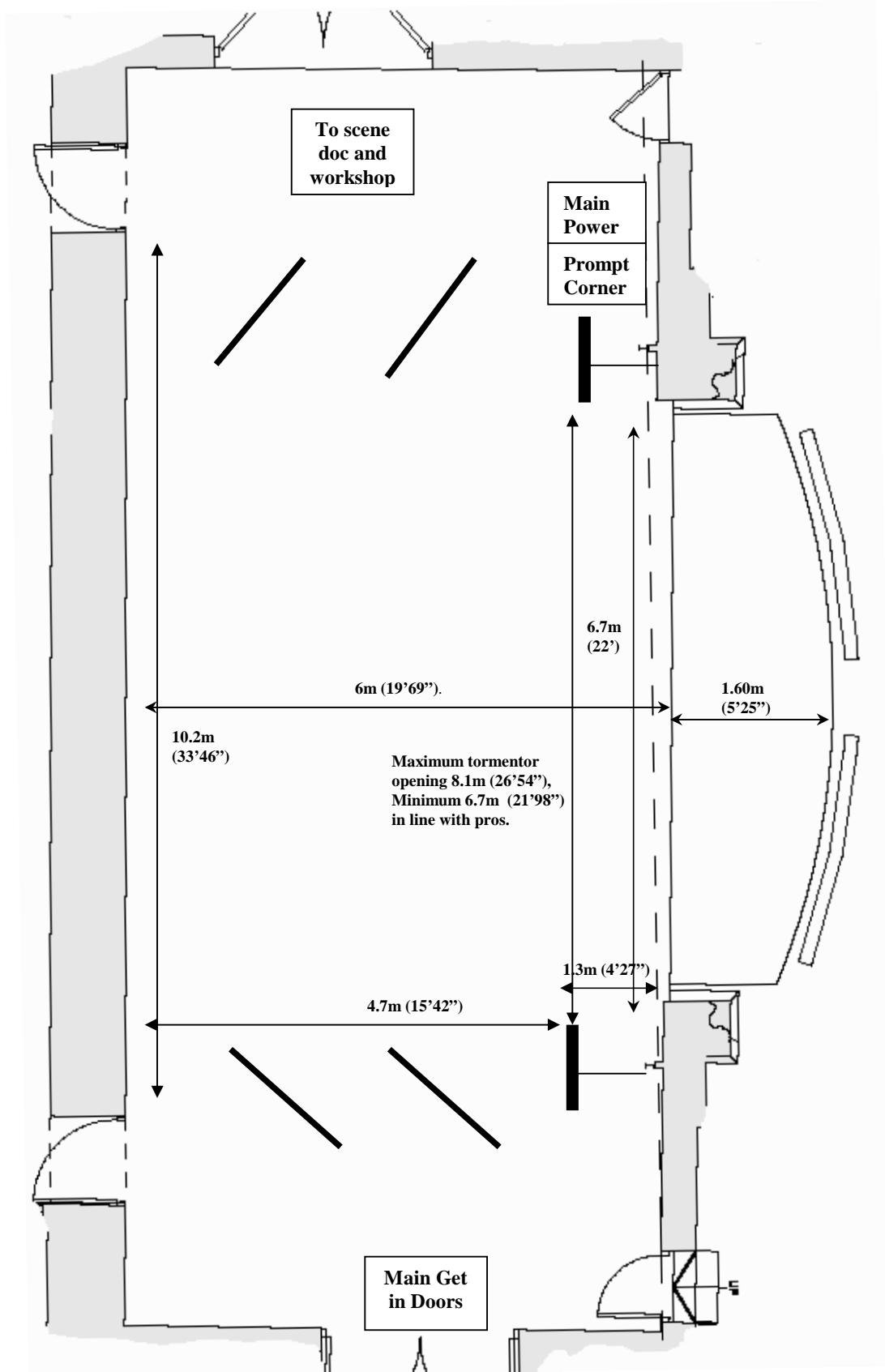
Lighting Circuit Plan  
13<sup>th</sup> Mar 2014



Spare circuits: 23.24.71.72



## 8. STAGE PLAN



# 9. HANGING PLOT & GRID PLAN

Scale 1:25

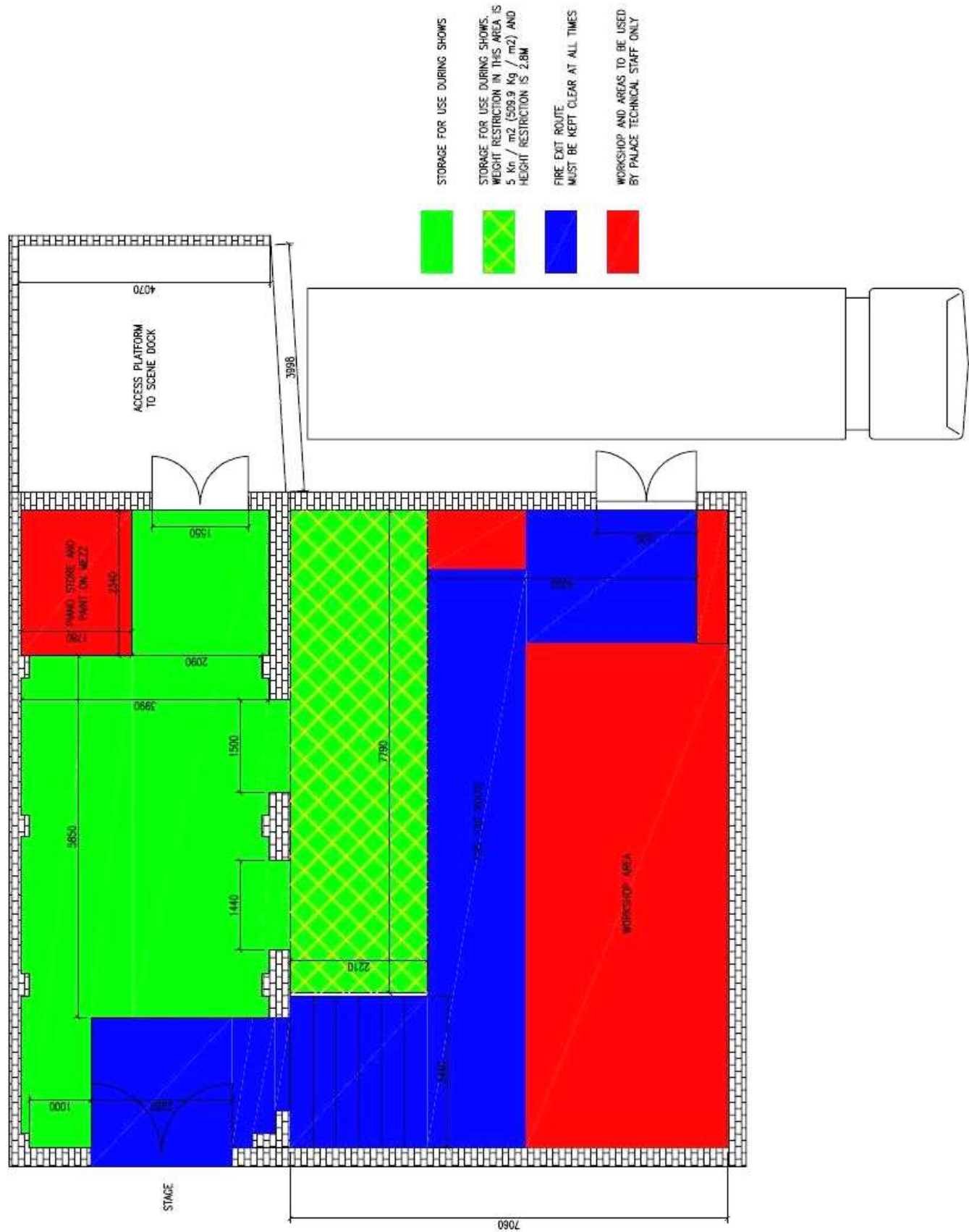
Default Hanging Plot

Note: Measurements in mm

Cyclorama							
Ruler	From Cyc	Bar No.	Cloth No.	Cloth Description	Bar No.	From Pos	Ruler
—	0	Op 17		Star Cloth	Op 17	6040	—
—	200	16		Full Blacks	16	5840	—
—	340	15			15	5700	—
—	490	14			14	5580	—
—	760	13			13	5280	—
—	1220	12			12	4820	—
—	1520	LX 3			LX 3	4520	—
—	1960	11		Pleated Black Border	11	4080	—
—	2110	10			10	3930	—
—	2270	9			9	3670	—
—		8A			8A		—
—	2580	8			8	3460	—
—	3220	LX 2			LX 2	2820	—
—	3370	7		Pleated Black Border	7	2670	—
—	3640	6			6	2400	—
—	3790	5			5	2250	—
—	4060	4			4	1980	—
—	4210	3			3	1830	—
—	4360	2			2	1680	—
—	4500	1			1	1540	—
—		O/P bar		Pleated Black Border	O/P bar		—
—	5040	LX 1		Below Bridge	LX 1	1000	—



# 10. SCENE DOCK AND LOAD IN PLAN





# 11. SOUND

## 11.1 Auditorium Sound Reinforcement:

- 4 x Martin Audio AQ10's (Circle) – 1,200w RMS (2 left & 2 right)
- 4 x Martin Audio AQ10's (Stalls) – 1,200w RMS (2 left & 2 right)
- 2 x Martin Audio AQ5's (1 x Box A & 1 x Box B mono sum of PA)
- 2 x Sub Bass Martin Audio S18's (Both in Orchestra pit) – 1000w RMS
- 1 x Sub Bass Martin Audio ICTS (Box A) flooding into circle.
- 2 x Martin Audio AQ5's Rear Circle Surround sound
- 2 x Tanoy Lynx rear stalls Surround sound
- 1 x Martin Audio DX1 Digital System Controller/ Crossover
- 2 x H & H 300 watt RMS speakers (Permanent side fills on stage)
- 6 x Channels of fold back via Martin Audio 4 x F10 & 1 x F12 full range cabinets & ICTS Base bin.

**NOTE: All amplifiers and system controllers are permanently wired and installed and can not be altered. The system has been analysed and set up for the acoustics of the auditorium.**

## 11.2 Main Mix Position (located at the rear of the Circle):

- 1 x Yamaha M7CL sound desk. For more information see:

<http://www.yamahaproaudio.com/products/mixers/m7cl/index.html> Permanent Patch to desk:

M7 Input	Where from:	Omni Out	Where to:
1 to 10	Stage left box XLR's in	1 to 6	Stage fold back amps (Power Patch in Tech store)
11 & 12	Stage left box Jack in	7 & 8	L & R control room Monitors
13 to 24	Stage right box XLR's in	9	Audio Feed to Lx desk
25 to 32	Orchestra Pit XLR's in	10	Building Audio
33 to 36	Satellite box inputs (37 to 40 spare @ M7)	11 & 12	Record sends to mini disk. Via Matrix 1&2
37 to 48	Radio Microphones 1 to 12	13 & 14	Surround L & R
Stereo 1	CD player / DVD player	15 & 16	Main Left and Right To system controller.
Stereo 2	Mini Disk		
Stereo 3	Media Player		
Stereo 4	Computer L & R (Rear, Sub & Centre spare @ M7)		

- 1 x Behringer Composer (permanently set for surround sound)
- 2 x Alesis M-EQ 230 30 Band Graphic Equalizer (permanently set for surround sound)
- 1 x Tascam MD 301 Mini Disc Player/Recorder
- 1 x Tascam CD player 160
- 1 x Audio Media player. Plays direct from USB memory sticks & card readers.
- 1 x PC dedicated to Audio play back.
- 1 x DVD / CD player

## 11.3 Loose Equipment:

- 3 x EV P1 881 Microphones
- 6 x Shure SM 58 Microphones
- 4 x Shure SM 57 Microphones
- 2 x Sennheiser K3-V Shot Rifle Microphones
- 2 x Crown PCC 160 PZM Microphones (Permanently mounted SL & SR on pros)
- 4 x Sennheiser EW 300 Lavalier or headsets (**Subject to hire charge**)
- 6 x Sennheiser EW 300 G3 Radio Microphone Receivers (**Subject to hire charge**)
  - 6 x G3 Lavalier (lapel or headset)
  - 5 x Hand Held
- 3 x AKG C418 Instrument Microphones
- 5 x EMO Single DI Box
- 3 x EMO Dual DI Box
- 2 x Calrec CB 21c Microphones

**Notes: All Sennheiser G3 hand held and lavalier CAN NOT be used at the same time as they share the same receivers. But they can be used in any configuration (IE 3 X Hand Held & 3 Leveilla)**

## 11.4 Show Relay and Communications:

The Theatre has full show relay to all dressing rooms with paging system via prompt corner & Control Room

The front of house calls are done from the control room or Stage by the technician on duty.

There are communication head sets at lighting, Control room mix position, main mix position, follow spot 1 & 2, prompt corner, opposite prompt and fly floor.



## 12. MULTI MEDIA

- 1 x Video projector Optoma EP727 DLP on Front of circle LX Bar
- 1 x DVD player located in sound position
- 1 x VGA Lead for Power Point presentations located in prompt corner and control room
- 1 x Colour Camera on front of circle LX Bar for video relay to wings
- 1 x Black and White Camera in Pit also links to video relay system including monitor on front circle
- 3 x 14" Colour TV'S (Stage Left, Stage Right & Fly floor), Channel 1 stage view, channel 2 pit.

---

## 13. POWER INFORMATION

7 x Independents switched from prompt corner. Positioned CSL, CSR, USL, USR, Fly floor, Op fly floor, Front Of Circle Lighting Bar

2 x Double 13 amp sockets stage left

1 x Double 13 amp socket stage right

**The following are located stage left, under the stage:**

2 x 32 Amp CEE form Sockets (yellow phase) each protected by 30mA RCD

1 x 63 Amp CEE form Socket (yellow phase) protected by 63 Amp MCCB

1 x 63 Amp 3 phase CEE form socket protected by 30 mA RCD

1 x 125 Amp 3 phase CEE form Socket protected by 100 Amp / 300 mA RCD

**Connections to these supplies will only be permitted once Evidence of a current Electrical Safety is proven. Connection to these supplies will be made by Palace Technical staff only.**

---

## 14. MISCELLANEOUS EQUIPMENT

**Curtains:**

- 1 x Main House Tabs Red
- 1 x Full Black Back Cloth
- 1 x White Gauze
- 1 x Black Gauze
- 1 x Set of Blue Tabs
- 1 x Grey Tabs with border & legs
- 1 x Red Tabs

**Staging:**

- 6 x 2m x 1m Metro deck sections
- 24 x 440 mm (17.32 inch's) Legs for Metro deck sections
- 12 x 660 mm (25.98 inch's) Legs for Metro deck sections
- 24 x 1500 mm (59 inch's) Legs for Metro deck sections
- 14 x Red interlocking armless Chairs in Orchestra Pit
- 1 x Mirror ball and motor
- 1 x Tab Track

2 x Antari Z1200 smoke machine permanently installed under stage smoke system (can be controlled via DMX or stand alone from prompt corner)

1 x Martin Magnum Hz 2500 (can be controlled via DMX & permanently installed Stage Right perch)

1 x Le Maitre Pyrotechnic Firer 6 – 24 permanently installed in prompt desk and hard wired to 9 locations on the stage, DSL, DSCL, DSC, DSCR, DSR, CSL, CSCL, CSCR, CSR.

1 x Steinway Baby Grand (On Stage)

1 x Fibre-optic Star Cloth, full width

**Certain items in this document are subject to a hire charge. Please see Palace Theatre Website for current fees and charges.**



## 15. FIRE EXIT ROUTE CAPACITIES

Dressing Room Block fire exit to car park	100
Get in Doors Stage Right	100
Stage door on Alcester street	40

---

### Notes:

All equipment on this specification is subject to availability. Please check with the technical department if you require any specific items listed on this document. We reserve the right to substitute any equipment without prior notice.

The Production / Hiring company staff are the responsibility of the Production / Hiring company and must be provided with all relevant PPE and safe working processes (i.e. relevant ear protection, safety shoes, risk assessments / method statements where applicable).

Please be aware that the orchestra pit will not be allowed to be used when a get in is in progress as this can affect the safety of everyone involved.

The stage can not be re painted for your production. You are welcome to put down suitable flooring such as dance floor. The flooring may only be taped, not stapled.

All electrical equipment brought into the venue by the visiting company must comply with the 17<sup>th</sup> Edition IEE Wiring Regulations, and must come with a valid and current electrical safety test certificate even if it is hired from a third party.

All rigging equipment must comply with the *Lifting Operations and Lifting Equipment Regulations* and must come supplied with a valid and current test certificate even if it is hired from a third party.

The Palace Theatre and its employees have the right to refuse to use any equipment that they think is unsafe or unsuitable for the task intended. **WE RESERVE THE RIGHT TO CANCEL ANY PRODUCTION IF WE FEEL IT DOES NOT COMPLY WITH OUR HEALTH AND SAFETY CONDITIONS**

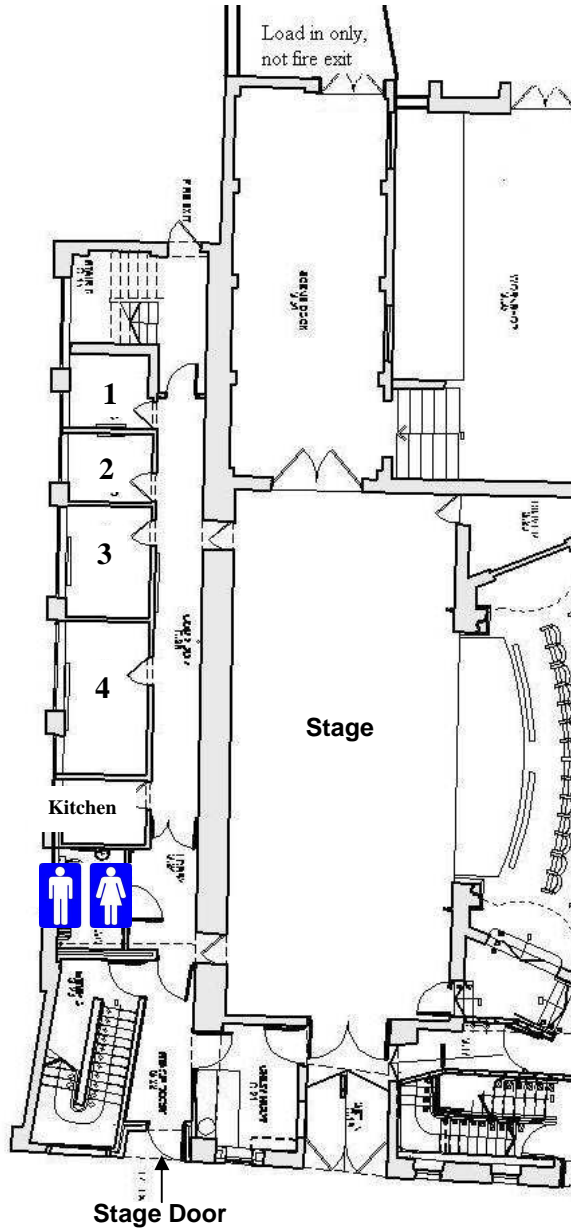
We are not able to pre-rig unless agreed in advance and by contract with The Palace Theatre and the visiting company.

The Technical Department must receive all technical requirements in the form of a rider at least five weeks prior to the event. This must include, as a minimum, get-in schedule, staff requirements, equipment requirements, lighting and ground plans, risk assessment and special effect license requirements (where required).

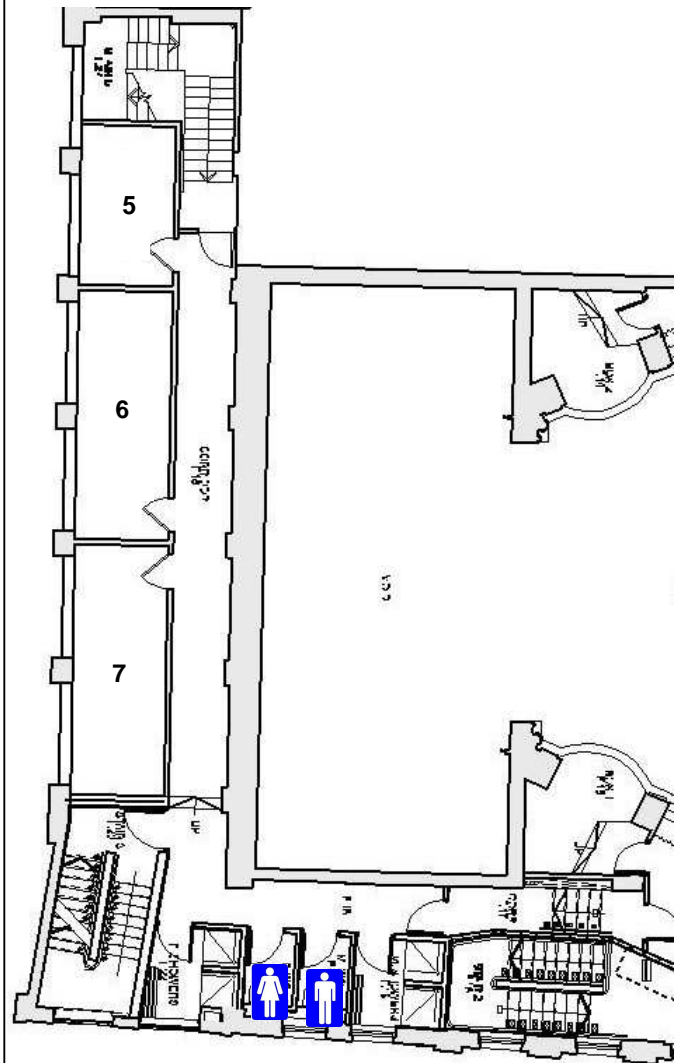
Please note all information contained in this document is subject to alteration.

E & O E

## 16. DRESSING ROOM AND BACK STAGE PLAN



**Ground Floor**



**First Floor**